

OUR SERVICES

Our support package for your study includes:

- ▶ Advice on your study proposal before initiation
- ▶ Standard contract clauses accepted by all our study sites
- ▶ Access to our ever-ready study sites all across Germany
- ▶ Facilitated recruitment of participants for your study
- ▶ Provision of high-quality biosamples and data
- ▶ Digital tools to ease research-related processes, such as gathering ethics documents or monitoring study progress

**WE LOOK FORWARD
TO YOUR QUERY!**

Get in touch



<https://sn.netzwerk-universitaetsmedizin.de>



info@sn.netzwerk-universitaetsmedizin.de

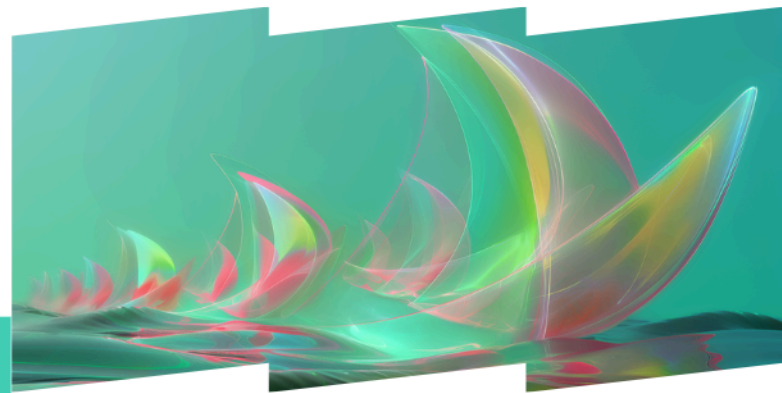


<https://www.linkedin.com/company/num-study-network>



NUM STUDY NETWORK

*Providing support
for faster and better clinical research*



A strong crew
for your
clinical study

With funding from the:



Federal Ministry
of Research, Technology
and Space

Who are we anyway?

Founded in July 2024, the NUM Study Network is a research infrastructure within the German *Network of University Medicine* (NUM).

To both researchers and industry partners alike, we offer support with rolling out clinical and clinical-epidemiological studies across all medical disciplines.

We want to boost clinical research and foster Germany's top position in international competition!

YOUR BENEFITS

You have a proposal for an academic or commercial study in any medical research field? Here are your benefits if you roll it out with the NUM Study Network:



SIMPLIFIED COMMUNICATION

We are a one-stop shop, directly connecting principal investigators and study sites.



EFFICIENT RECRUITMENT

Our trained and ever-ready study staff and our prescreening mechanisms warrant an earlier start of your study and help you find matching participants.



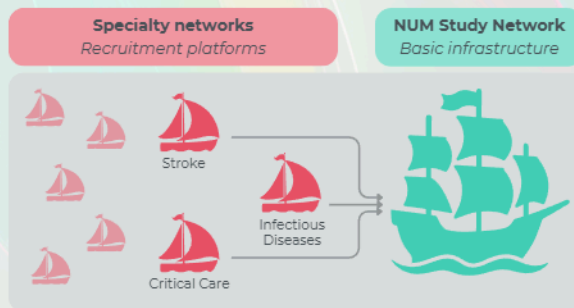
SMOOTH PROCESSES

Broad digitalization, standard contract clauses, and quality- and performance-driven procedures will accelerate the realization of your study.

HIGH-PERFORMANCE SPECIALTY NETWORKS

The NUM Study Network, our basic infrastructure, is complemented by several specialty networks. They are specialized in various subject areas and offer targeted recruitment and extensive expertise from their connected professional communities.

We currently have three actively running specialty networks: *Infectious Diseases*, *Stroke*, and *Critical Care* – more are to follow.



If your study is related to one of our specialty networks, you can directly profit from the established structures. Otherwise, we will realize your study using our direct line to all our study sites.

OUR PARTNERS

Our strong nationwide network of partners from all areas of clinical research is what makes us unique. We work closely with all relevant agents from academia, science, industry, administration, and politics.